

FEATURES

- 18 to 24 inch diameters
- High quality, heavy duty aluminum blades
- Zinc and dichromate plated steel spiders
- For use with interchangeable hex hubs
- Blades tested at 1000 RPM

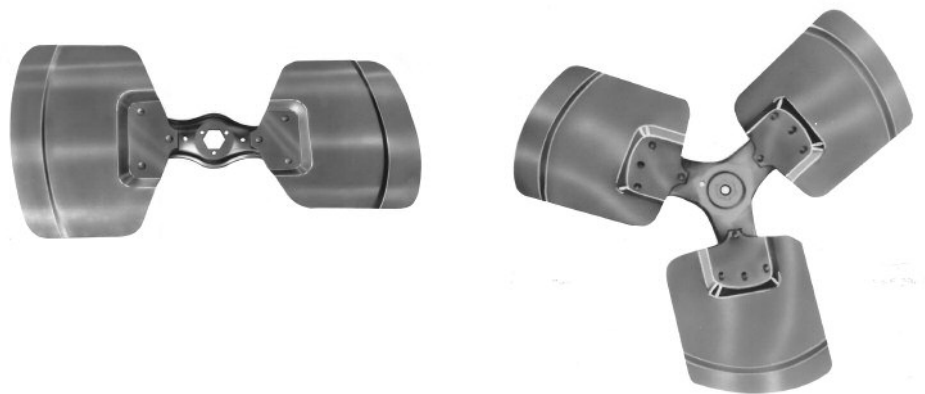
PART NUMBER BREAKDOWN					
NO. OF BLADES	FAN BLADE TYPES	ROTATION	BLADE DIAMETER	BLADE PITCH	HUB BORE SIZE
2- 3- 4- 5- Etc...	C-Condenser F-Free Air S-Slinger Ring	R-Right, CW Viewing Air Discharge Side L-Left, CCS Viewing Air Discharge Side	In Inches	In Degrees	1=1/4" HUB I.D. 2=5/16" HUB I.D. 3=3/8" HUB I.D. 4=1/2" HUB I.D. 5=5/8" HUB I.D. 6=3/4" HUB I.D.
EXAMPLE					
3	C	R	18	33	4 (Fixed hubs only)

TYPICAL APPLICATIONS

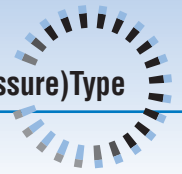
- Air-conditioning condensers
- Power roof ventilators
- Heat pumps
- Heat exchangers
- Unit heaters
- Commercial and industrial equipment

TWO BLADE									
PART NO.	FAN			STATIC PRESSURE				STD PACK	MAX RPM
	ROTATION	DIA (IN)	PITCH (DEG)	0"		.30"			
				CFM	BHP	CFM	BHP		
2CL1827	C.C.W.	18	27	2400	.08	870	.11	4	1725
2CL2025	C.C.W.	20	25	3000	.10	1320	.15	4	1725
2CL2227	C.C.W.	22	27	4340	.17	2200	.26	4	1725

THREE BLADE									
PART NO.	FAN			STATIC PRESSURE				STD PACK	MAX RPM
	ROTATION	DIA (IN)	PITCH (DEG)	0"		.30"			
				CFM	BHP	CFM	BHP		
3CR1827	C.W.	18	27	2450	.10	1260	.14	2	1725
3CR1833	C.W.		33	2830	.14	1620	.21		1725
3CR2024	C.W.	20	24	3160	.17	2010	.23	2	1725
3CR2028	C.W.		28	3560	.21	2410	.27		1725
3CR2031	C.W.		31	3870	.24	2680	.30		1140
3CR2426	C.W.	24	26	5860	.42	4600	.49	2	1140
3CR2433	C.W.		33	7010	.63	5600	.70		1140



Thermally protected • UL recognized • CSA or ULc certified
NOTE: Rotation is determined by looking at shaft end. Shaft length is measured from motor face.



FEATURES

- 14 to 26 inch diameters
- High quality, heavy duty aluminum blades
- Zinc and dichromate plated steel spiders
- For use with interchangeable hubs
- Blades tested at 1000 RPM

TYPICAL APPLICATIONS

- Air-conditioning condensers
- Heat pumps
- Power roof ventilators
- Industrial equipment
- Unit heaters
- Heat exchangers

FOUR BLADE										
PART NO.	ROTATION	FAN			STATIC PRESSURE				STD PACK	MAX RPM
		DIA (IN)	PITCH (DEG)	0"		.30"				
				CFM	BHP	CFM	BHP			
4CR1423	C.W.	14	23	1000	.04	400	.06	2	1725	
4CL1423	C.C.W.									
4CR1433	C.W.		33	1320	.07	670	.10			
4CL1433	C.C.W.									
4CR1623	C.W.	16	23	1630	.09	1030	.12	2	1725	
4CL1623	C.C.W.									
4CR1633	C.W.		33	2550	.15	1450	.18			
4CL1633	C.C.W.									
4CR1827	C.W.	18	27	2490	.12	1510	.18	2	1725	
4CL1827	C.C.W.									
4CR1833	C.W.		33	2950	.17	1870	.23			
4CL1833	C.C.W.									
4CR2026	C.W.	20	26	3540	.24	2580	.32	2	1725	
4CL2026	C.C.W.									
4CR2029	C.W.		29	3920	.29	2290	.35		1140	
4CR2033	C.W.									
4CL2033	C.C.W.									
4CR2223	C.W.	22	23	4100	.25	3100	.37	2	1140	
4CR2227	C.W.									
4CL2227	C.C.W.		27	4840	.28	3640	.37			
4CR2235	C.W.									
4CL2235	C.C.W.									
4CR2418	C.W.	24	18	4500	.25	3500	.25	2	1140	
4CR2423	C.W.									
4CL2423	C.C.W.		23	5400	.35	4600	.45			
4CR2427	C.W.									
4CL2427	C.C.W.									
4CR2433	C.W.									
4CR2627	C.W.	26	27	7600	.64	6690	.80	2	1140	
4CR2633	C.W.									33





FEATURES

- 14 to 24 inch diameters
- High quality, heavy duty aluminum blades
- Factory balanced, 1/2" bore, shaved and staked hub-attached on intake side
- Blades tested at 1000 RPM

THREE BLADE									
PART NO.	FAN			STATIC PRESSURE				STD PACK	MAX RPM
	ROTATION	DIA (IN)	PITCH (DEG)	0"		.30"			
				CFM	BHP	CFM	BHP		
3CR1833-4	C.W.	18	33	2830	.14	1620	.21	4	1725
3CR2033-4	C.W.	20	33	4070	.26	2830	.33	4	1140

TYPICAL APPLICATIONS

- Air-conditioning condensers
- Power roof ventilators
- Heat pumps
- Heat exchangers
- Unit heaters
- Exhaust fans

FOUR BLADE									
PART NO.	FAN			STATIC PRESSURE				STD PACK	MAX RPM
	ROTATION	DIA (IN)	PITCH (DEG)	0"		.30"			
				CFM	BHP	CFM	BHP		
4CR1433-4	C.W.	14	33	1320	.07	670	.10	4	1725
4CR1633-4	C.W.	16	33	2550	.15	1450	.18	4	1725
4CR1833-4	C.W.	18	33	2950	.17	1870	.23	4	1725
4CR2033-4	C.W.	20	33	4350	.35	3270	.42	4	1140
4CL2033-4	C.C.W.								
4CR2233-4	C.W.	22	33	5670	.41	4290	.51	4	1140
4CR2433-4	C.W.	24	33	7600	.64	6190	.87	4	1140



Thermally protected • UL recognized • GSA or ULc certified
NOTE: Rotation is determined by looking at shaft end. Shaft length is measured from motor face.



FEATURES

- 7 to 10 inch diameters
- High quality aluminum blades
- CW fans have hub attached on discharge side
- CCW fans have hub attached on intake side
- Zinc and chromate coated steel hub
- Blades tested at 1000 RPM

TYPICAL APPLICATIONS

- Freezers
- Heaters
- Refrigerators

FIVE BLADE FIXED HUB ONE PIECE TYPE								
PART NO.	ROTATION	DIA (IN)	PITCH (DEG)	BORE (IN.)	MAX RPM	0" STATIC PRESSURE		STD PACK
						CFM	BHP	
5FR727-1	C.W.	7	28	1/4	3450	450	.05	10
5FL727-1	C.C.W.							
5FR727-2	C.W.	7	28	5/16	3450	450	.05	10
5FL727-2	C.C.W.							
5FR824-1	C.W.	8	24	1/4	3450	620	.07	10
5FL824-1	C.C.W.							
5FR824-2	C.W.	8	24	5/16	3450	620	.07	10
5FL824-2	C.C.W.							
5FR832-1	C.W.	8	32	1/4	3450	750	.11	10
5FL832-1	C.C.W.							
5FR832-2	C.W.	8	32	5/16	3450	750	.11	10
5FL832-2	C.C.W.							
5FR926-1	C.W.	9	25	1/4	3000	800	.09	10
5FL926-1	C.C.W.							
5FR926-2	C.W.	9	25	5/16	3000	800	.09	10
5FL926-2	C.C.W.							
5FR1020-1	C.W.	10	22	1/4	1725	550	.02	10
5FL1020-1	C.C.W.							
5FR1020-2	C.W.	10	22	5/16	1725	550	.02	10
5FL1020-2	C.C.W.							
5FR1031-2	C.W.	10	33	5/16	1725	740	.04	10
5FL1031-2	C.C.W.							

FIVE BLADE HUBLESS UNIT BEARING TYPE								
PART NO.	ROTATION	DIA (IN)	PITCH (DEG)	BORE (IN.)	MAX RPM	0" STATIC PRESSURE		STD PACK
						CFM	BHP	
5FR1023	C.W.	10	23	1/4	1550	525	.02	10
5FR721	C.W.	7	21	1/4	1550	300	.01	10
5FR823	C.W.	8	23	1/4	1550	400	.01	10
5FR925	C.W.	9	25	1/4	1550	500	.01	10
5FR1028	C.W.	10	28	1/4	1550	700	.02	10

