



FASCO MODEL	TYPE	HP	VOLTS	RPM	SPD.	AMPS	ENCLOSURE	ROT.	BRNG.	SHAFT DIM.	"A" DIM.	CROSS REF.	FIG.	NOTES
D494	SP	1/20	115/208-230	1050	1	3-1.6	Open Vent.	CW	SLV	3/8 x 3-1/8	4	GE 2321, 2322	A	18,45,64,65
D492	SP	1/15	115/208-230	1050	1	3.4-1.7	Open Vent.	CW	SLV	3/8 x 3-1/8	4 5/8	GE 2223	A	18,45,64,65
D490	SP	1/10	115/208-230	1050	1	5-2.5	Open Vent.	CW	SLV	3/8 x 3-1/8	4 5/8	GE 2121, 2122	A	18,45,64,65
D495	SP	1/20	115/208-230	1050	1	3-1.6	Open Vent.	CCW	SLV	3/8 x 3-1/8	4	GE 2311, 2312	A	18,45,64,65
D493	SP	1/15	115/208-230	1050	1	3.4-1.7	Open Vent.	CCW	SLV	3/8 x 3-1/8	4 5/8	GE 2213	A	18,45,64,65
D491	SP	1/10	115/208-230	1050	1	5-2.5	Open Vent.	CCW	SLV	3/8 x 3-1/8	4 5/8	GE 2113	A	18,45,64,65
D486	PSC	1/10	115/208-230	1550	1	2.5-1.3	Open Vent.	REV	SLV	3/8 x 3-1/8	4 1/8		B	18
D487	PSC	1/10	115/208-230	1550	1	2.7-1.4	Open Vent.	REV	SLV	3/8 x 3-1/8	4 7/8		C	18
D497	PSC	1/10	115/208-230	1050	1	2.0-1.0	Open Vent.	REV	BALL	3/8 x 3-1/8	4 7/8		C	18
D488	PSC	1/20	115/208-230	1550	1	1.2-.6	Open Vent.	REV	SLV	3/8 x 3-1/3	4 9/16	GE 2341, 2342, 2331, 2332	D	15,66,67
D489	PSC	1/15	115/208-230	1550	1	1.2-.6	Open Vent.	REV	SLV	3/8 x 3-1/3	4 13/16	GE 2241, 2342, 2231, 2232	D	15,66,67
D474	PSC	1/10	115/208-230	1550	1	1.9-1.0	Open Vent.	REV	SLV	3/8 x 3-1/3	4 13/16	GE 2141, 2142, 2131, 2132	D	15,66,67

NOTES: 15: Air Over 18: Self-Cooled 45: Mechanically Reversible 64: 3/8" shaft diameter with adapter to convert to 1/2" diameter 65: Weld nuts on a 3.5" B.C. for stud mount 66: Front end shield drilled and tapped with four 10-32 threads on 3.5" bolt circle 67: 3M 370V Capacitor required



FIG. A D494, D492, D490, D495, D493, D491

FIG. B D486

FIG. C D487, D497

FIG. D D488, D489, D474



FASCO MODEL	TYPE	HP	VOLTS	RPM	SPD.	AMPS	ENCLOSURE	ROT.	BRNG.	SHAFT DIM.	"A" DIM.	FIG.	NOTES
D249	SP	1/50-1/80-1/160	115	1050	3	1.1-.6-.4	Open Vent.	DS	SLV	7-5/8 x 3/8 x 7-5/8	2 5/8	A	
D255	SP	1/25-1/50-1/80	115	1050	3	1.5-1-.6	Open Vent.	DS	SLV	7-1/2 x 1/2 x 7-1/2	3 1/4	A	
D250	SP	1/25-1/50-1/80	115	1050	3	1.5-1-.6	Open Vent.	DS	SLV	8 x 3/8 x 8	3 1/4	A	
D655	SP	1/25-1/40-1/70	230	1050	3	.7-.5-.3	Open Vent.	DS	SLV	10 x 1/2 x 10	3 1/4	A	
D252	SP	1/20-1/40-1/70	115	1050	3	1.6-.8-.5	Open Vent.	DS	SLV	7-1/2 x 3/8 x 7-1/2	2 5/8	A	
D253	SP	1/20-1/40-1/50	115	1050	3	2.2-1.4-.8	Open Vent.	DS	SLV	7-1/2 x 1/2 x 7-1/2	2 5/8	A	
D254	SP	1/15-1/30-1/50	115	1050	3	2.1-1.3-.8	Open Vent.	DS	SLV	8 x 3/8 x 8	3 1/4	A	
D251	SP	1/15-1/35-1/50	208-230	1050	3	1.2-.5-.4	Open Vent.	DS	SLV	9-1/4 x 1/2 x 8-1/2	2 5/8	B	
D257	SP	1/15-1/20-1/25	277	1050	3	1.1-.7-.6	Open Vent.	DS	SLV	9 x 1/2 x 9	3 1/4	C	
D389	SP	1/15-1/20-1/30-1/50	115	1050	4	2.4-1.6-1.1-.8	Open Vent.	DS	SLV	10-1/4 x 1/2 x 10-1/4	3 1/8	A	
D256	SP	1/10-1/20-1/30	115	1050	3	3.4-1.7-1	Open Vent.	DS	SLV	8 x 1/2 x 8	3 7/8	A	
D293	SP	1/10-1/30-1/40-1/45-1/50	115	1050	5	3.6-1.6-1.2-.8-.6	Open Vent.	DS	SLV	10-3/4 x 3/8 x 10-3/4	3 1/4	B	
D289	SP	1/10-1/30-1/40-1/45-1/50	115	1050	5	3.6-1.6-1.2-.8-.6	Open Vent.	DS	SLV	10-3/4 x 1/2 x 10-3/4	3 1/4	B	
D224	SP	1/6-1/8-1/12	230	1050	3	3.2-2.3-1.8	Open Vent.	DS	SLV	10 x 1/2 x 10		A	
D290	PSC	1/10-1/15-1/25-1/40	115	1050	4	2.2-1.4-1-.7	Open Vent.	REV	SLV	1/2 x 8-1/2	3 1/4	D	20,68
D291	PSC	1/10-1/15-1/25-1/40	115	1050	4	2.2-1.4-1-.7	Open Vent.	DS	SLV	10-3/4 x 1/2 x 10-3/4	3 1/4	E	20
D294	PSC	1/10-1/20-1/25-1/35-1/50	115	1050	5	1.3-1-.7-.6-.5	Open Vent.	DS	SLV	10-3/4 x 3/8 x 10-3/4	3 1/4	E	69
D292	PSC	1/10-1/15-1/25-1/35	208-230	1050	4	1-.7-.4-.3	Open Vent.	DS	SLV	10-3/4 x 1/2 x 10-3/4	3 1/4	E	20
D277	PSC	1/10-1/12-1/20	277	1050	3	.7-.5-.4	Open Vent.	DS	SLV	8-1/2 x 1/2 x 8-1/2	3 7/8	F	20
D1005	PSC	1/10-1/15	460	1075	2	.5-.3	Open Vent.	DS	SLV	9-5/8 x 1/2 x 9-5/8	3 1/3	B	
D354	PSC	1/6-1/10-1/20	115	1050	3	2.8-1.8-1.0	Open Vent.	DS	SLV	8-1/2 x 1/2 x 8-1/2	3 7/8	F	20
D245	PSC	1/3-1/5	230	1050	2	2.9-1.7	Open Vent.	DS	SLV	8 x 1/2 x 8	4 1/2	G	20
D221	PSC	1/6-1/8-1/10-1/12	115	1550	4	3.2-1.7-1.3-1	Open Vent.	DS	SLV	8 x 1/2 x 8	3 5/8	F	70
D382	PSC	1/25-1/40-1/50	115	1550	3	.6-.4-.3	Open Vent.	DS	SLV	6-7/8 x 1/2 x 6-7/8	3	G	70
D1050	PSC	1/8	230	1550	1	1.1	Totally Encl.	CW	SLV	1/2 x 3	3 1/4	H	
D347	PSC	1/8-1/10-1/15-1/20	115	1550	4	2.3-1.6-.7	Open Vent.	DS	SLV	10-1/2 x 1/2 x 10-1/2	3	I	20,71
D247	PSC	1/6-1/8-1/12	230	1550	3	1-.7-.5	Open Vent.	DS	SLV	8 x 1/2 x 8	3 7/8	A	20
D258	PSC	1/5-1/10	208-230	1550	2	2.8-1.3	Open Vent.	DS	SLV	8 x 1/2 x 8	3 3/8	F	70
D1025	PSC	1/3	208-230	1625	1	2.3	Open Vent.	DS	SLV	7-1/8 x 1/2 x 7-1/4	4 1/8	A	70,71

NOTES: 20: 4M 370V Capacitor included 68: Electrically Reversible 69: 6M 370V Capacitor included 70: 5M 370V Capacitor included 71: Mounting rings not included



FIG. A D249, D255, D250, D655, D252, D253, D254, D389, D256, D224, D247, D1025

FIG. B D251, D293, D289, D1005

FIG. C D257

FIG. D D290

FIG. E D291, D294, D292

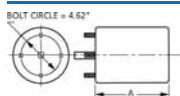


FIG. F D277, D354, D221, D258

FIG. G D245, D382

FIG. H D1050

FIG. I D347



Thermally protected • UL recognized • CSA or ULc certified  
 NOTE: Rotation is determined by looking at shaft end. Shaft length is measured from motor face.

# 5.0" Diameter

## Direct Drive Blower Motors



FASCO MODEL	TYPE	HP	VOLTS	RPM	SPD.	AMPS	ENCLOSURE	ROT.	BRNG.	SHAFT DIM.	"A" DIM.	FIG.	NOTES
D154	SP	1/10	115	1050	1	5	Open Vent.	CW	SLV	3/8 x 2-3/4	4 5/8	A	72
D177	SP	1/10-1/20	115	1050	2	3.9-1.7	Open Vent.	CCW	SLV	3/8 x 3-5/8	2 5/8	B	
D176	SP	1/10-1/20	115	1050	2	3.9-1.7	Open Vent.	CW	SLV	3/8 x 3	2 5/8	C	
D160	SP	1/10-1/12-1/15	115	1050	3	3.4-2.8-2.4	Open Vent.	CW	SLV	3/8 x 3-7/8	3 7/8	D	
D656	SP	1/8	230	1050	1	2.1	Open Vent.	CW	SLV	1/2 x 3-7/8	3 7/8	D	
D1046	SP	1/8	115	1070	1	5.1	Open Vent.	CW	SLV	1/2 x 2-1/4	3	A	
D178	SP	1/8-1/11	115	1050	2	4.5-3.4	Open Vent.	CW	SLV	1/2 x 4	3 1/4	A	73
D314	SP	1/8-1/15	230	1050	2	2.3-1.5	Open Vent.	CW	SLV	1/2 x 5	4 3/8	E	73,74
D180	SP	1/8-1/11	115	1050	2	4.5-3.4	Open Vent.	CW	SLV	1/2 x 4	3 1/4	F	73,75
D316	SP	1/8-1/10	230	1050	2	2.1-1.8	Open Vent.	CW	SLV	1/2 x 3-1/2	3 7/8	G	
D356	SP	1/8-1/10-1/12	115	1050	3	4.7-3.7-3.2	Open Vent.	CW	SLV	1/2 x 3-1/2	3 1/8	H	
D156	SP	1/6	115	1050	1	6.6	Open Vent.	CW	SLV	1/2 x 3-7/8	3 7/8	A	
D166	SP	1/6-1/9	115	1050	2	7.2-3.8	Open Vent.	CW	SLV	1/2 x 3-1/2	3 7/8	A	
D164	SP	1/6-1/8-1/10-1/2	115	1050	4	6.5-4.8-4.3-3.7	Open Vent.	CW	SLV	1/2 x 4-1/2	3 7/8	A	
D318	SP	1/6-1/8	230	1050	2	3.1-2.2	Open Vent.	CW	SLV	1/2 x 3-1/2	4	F	
D158	SP	1/5-1/6-1/7	115	1050	3	6.7-5.3-4.7	Open Vent.	CW	SLV	1/2 x 4-1/8	3 7/8	A	
D658	SP	1/5-1/6-1/7-1/8	208-230	1050	4	4-3.4-3.1-2.4	Open Vent.	CW	SLV	1/2 x 5-1/4	3 7/8	A	
D150	PSC	1/4-1/5-1/6	115	1050	3	4.1-3.2-2.5	Open Vent.	REV	SLV	1/2 x 6	4 1/8	I	
D151	PSC	1/4-1/5-1/6	230	1050	3	1.7-1.2-1.0	Open Vent.	REV	SLV	1/2 x 6	4 1/8	I	
D152	PSC	1/4-1/5-1/6-1/8	277	1050	4	1.6-1.1-.9-.7	Open Vent.	REV	SLV	1/2 x 6	4 1/8	I	
D264	PSC	1/8	230	1550	1	1.1	Open Vent.	REV	SLV	1/2 x 5	3 1/3	J	76
D262	PSC	1/5	230	925	1	2.3	Open Vent.	REV	SLV	1/2 x 4	3 7/8	F	76

NOTES: 72: Has internal fan & 3.5" BC mounting holes for GE 21/29 Frame replacement. 73: Drilled and tapped holes in case for Coleman mounting 74: Internal cooling fan 75: D180 for International Oil Burner Co. - Furnaces MAC5A, 1045, 1052, 1060, 1145, 1155, 1165, 1175, 1265, 1380, 7040, 7060. 76: Luxaire/Whisperaire



FIG. A D154, D1046, D178, D156, D166, D164, D158, D658



FIG. B D177



FIG. C D176



FIG. D D160, D656



FIG. E D314



FIG. F D180, D318, D262



FIG. G D316



FIG. H D356



FIG. I D150, D151, D152



FIG. J D264



FASCO MODEL	TYPE	HP	VOLTS	RPM	SPD.	AMPS	ENCLOSURE	ROT.	BRNG.	SHAFT DIM.	"A" DIM.	FIG.	NOTES
D340	SP	1/40	115	1050	1	1.1	Totally Encl.	CW	SLV	3/8 x 2-5/8	2 5/8	A	77,78
D143	SP	1/30-1/40	115	1050	2	1.5-1	Open Vent.	CCW	SLV	1/2 x 1-5/8	2 1/4	B	77,79
D1038	SP	1/25	115	1050	1	1.4	Open Vent.	CW	SLV	1/2 x 2-1/2	4	C	77
D1036	SP	1/20	115	1045	1	1.95	Open Vent.	CW	SLV	3/8 x 2-1/8	2 3/8	D	77,80
D342	SP	1/15	115	1050	1	2.3	Open Vent.	CW	SLV	3/8 x 2-1/2	2 9/16	D	77,78
D140	SP	1/15	115	1050	1	2.7	Open Vent.	CW	SLV	3/8 x 2-3/8	2 5/8	E	77,81
D142	SP	1/15-1/25	115	1050	2	2.6-1.6	Open Vent.	CW	SLV	3/8 x 2-3/8	2 1/4	F	77
D1054	SP	1/12-1/20-1/25	115	1050	3	3.1-2.1-1.5	Open Vent.	CW	SLV	1/2 x 2-1/2	2 5/8	G	77,82
D148	SP	1/10	115	1050	1	3.6	Open Vent.	CW	SLV	3/8 x 3-1/2	2 5/8	H	77
D144	SP	1/10	115	1050	1	3.6	Open Vent.	CW	SLV	1/2 x 4-1/2	2 5/8	E	77
D1066	SP	1/10	115	1050	1	3.6	Open Vent.	CW	SLV	1/2 x 2-3/4	3 7/8	I	77
D1028	SP	1/8	115	1050	1	3.3	Open Vent.	CW	SLV	1/2 x 2-1/2	3 1/2	J	77
D240	SP	1/6	115	1050	1	6.2	Open Vent.	CW	SLV	1/2 x 3-1/2	4	K	77,83
S156	SP	1/3	115	1050	1	6.6	Open Vent.	CW	SLV	1/2 x 3-7/8	3 1/2	L	77
D242	SP	1/20	115	1050	1	2	Open Vent.	CW	SLV	3/8 x 3	3 1/8	A	84,85
D261	PSC	1/8-1/15	115	1075	2	2.3-1.1	Open Vent.	REV	SLV	1/2 x 3	3 5/8	M	20,84
D260	PSC	1/6	115	1075	1	2.9	Open Vent.	CW	SLV	1/2 x 3	3 7/8	M	20,84,86

NOTES: 20: 4M 370V Capacitor included 77: Roof Top Ventilators 78: With plug for Penn Ventilator 79: Replacement for Siegler & Williams wall heaters 80: Penn Ventilator 81: Replacement for Butler & Leslie-Locke roof ventilator--BX Connector 82: Hub only on shaft end 83: Replacement for Leslie-Locke roof ventilator 84: Unit heater 85: Sterling Radiator Co. 86: Replacement for ITT REZNOR



FIG. A D340, D242



FIG. B D143



FIG. C D1038



FIG. D D1036, D342



FIG. E D140, D144



FIG. F D142



FIG. G D1054



FIG. H D148



FIG. I D1066



FIG. J D1028



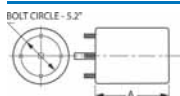
FIG. K D240



FIG. L S156



FIG. M D261, D260



Thermally protected • UL recognized • CSA or ULc certified  
 NOTE: Rotation is determined by looking at shaft end. Shaft length is measured from motor face.